

Introduction

This tutorial explains how to access the administration control panel for your site. Your site is controlled through an application called Plesk, this is where you can add users to administrate your site, set up email addresses for your domain and grant ftp access. Plesk operations will be discussed in a future tutorial.

Throughout this guide you need to substitute your domain name for `example.com`

Accessing Plesk

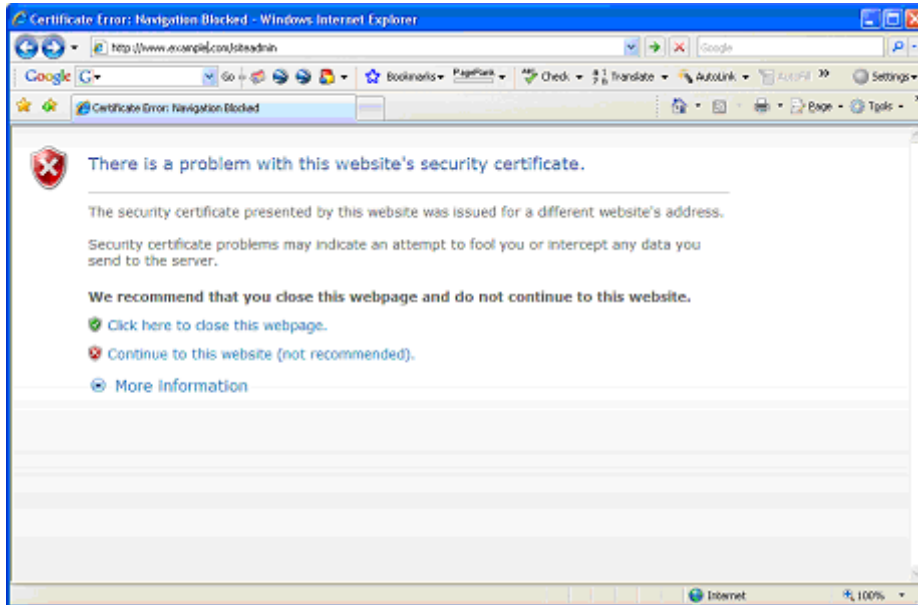
Open your web browser and navigate to `www.example.com/siteadmin`, this will redirect you to your secure login page.

Note:

For security reasons, you can access your control panel only through a secure connection provided by the Secure Sockets Layer-enabled hypertext transfer protocol. All data you exchange with the Plesk managed server is encrypted, thus preventing interception of sensitive information.

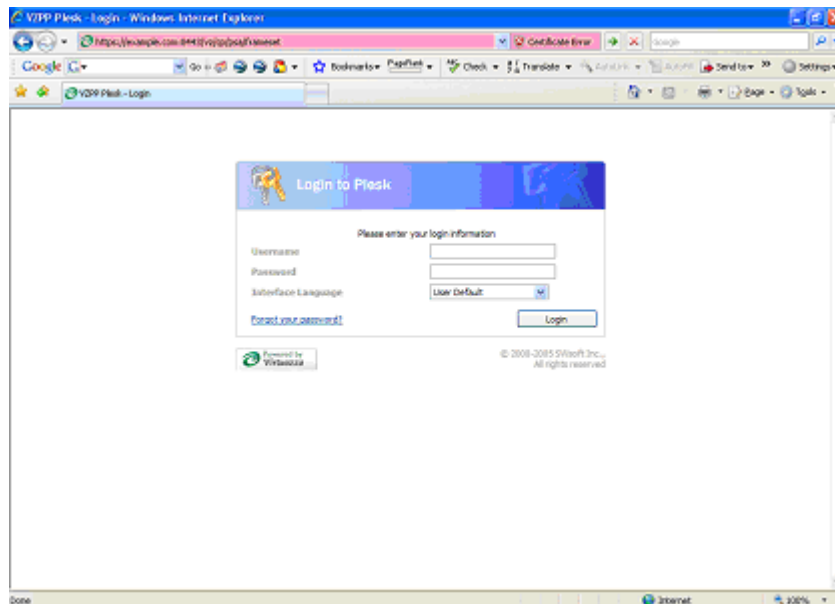
The SSL certificate used in the data encryption process is automatically generated and installed on the server during installation of the control panel. This is a so-called self-signed certificate: it is not signed by a recognized certification authority (CA), therefore, upon attempting to connect to your control panel, you will see warning messages in Web browsers (See next page). This warning should be ignored and the 'continue to website' option selected.

This will have no detrimental effect on the security of your site, communications between your computer and the Plesk interface will be fully encrypted. We have opted not to use signed certificates, as one would be required for every domain. This would significantly increase the price of our hosting plans and we would be unable to offer the free trial.



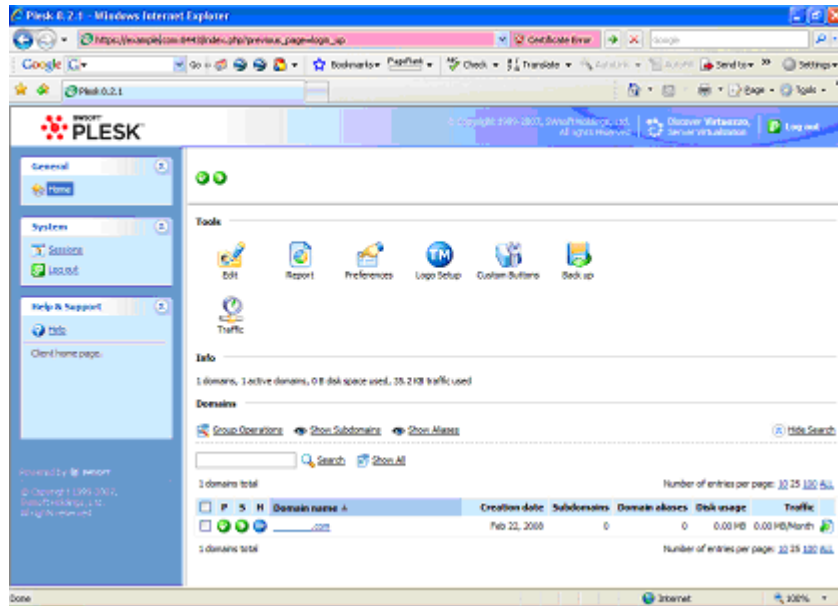
Typical Warning Message

Once the 'Continue to website' option has been selected the Plesk login screen will be shown:



Plesk login screen

Enter your username and password into the appropriate fields. Click login to continue. You should now be logged into your control panel and see a screen similar to the one shown below:



Control panel main screen

You are now logged into your sites control panel, other tutorials in this series will guide you through the operations that can be performed through the Plesk interface.

About us

This tutorial has been produced by ProserveUK. A professional hosting company that provides affordable web hosting solutions. Large selection of plans available, one-month free trial offered on all plans.

For more information, please visit www.proserveuk.com
Or contact us as sales@proserveuk.com.